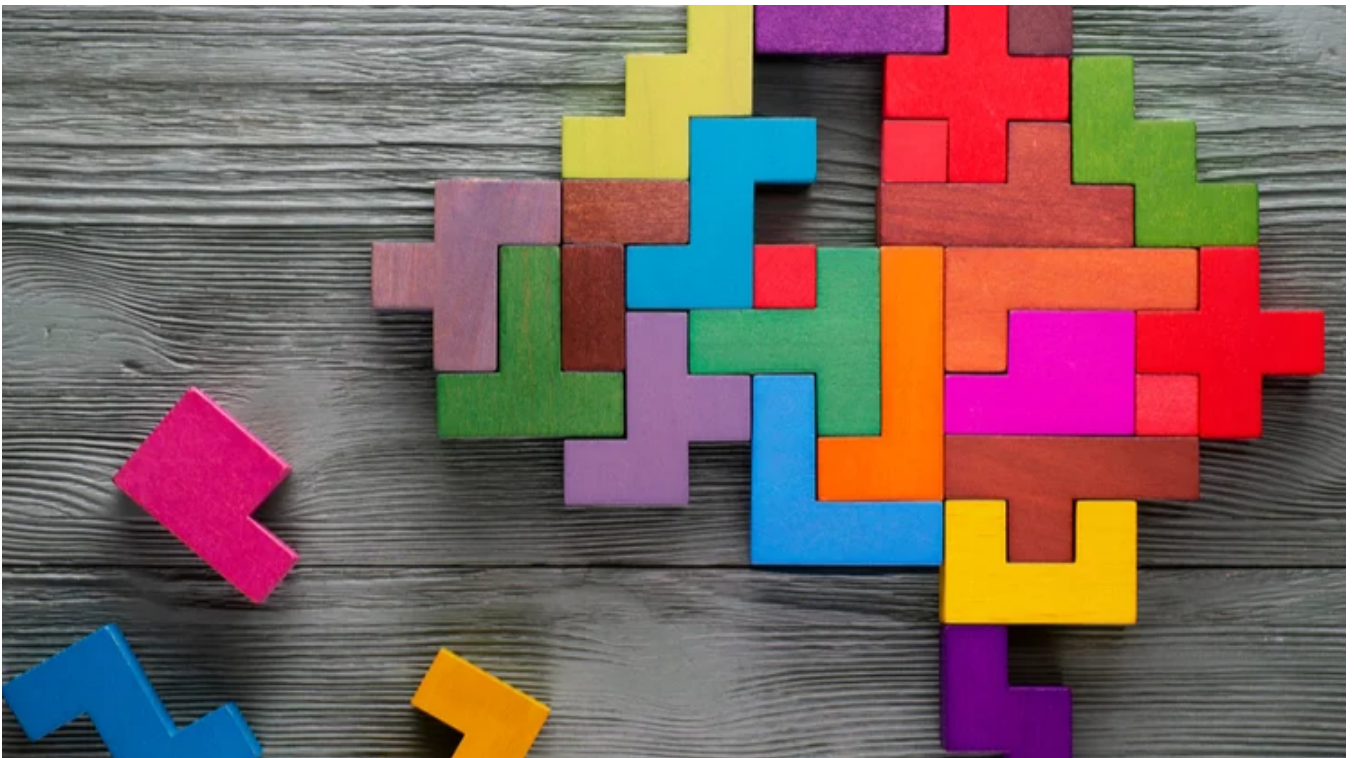


Perpetual knowledge bank series: market rotation

13 May 2021



Market rotation can take different forms but generally refers to the movement of investment capital from one equity class to another. This typically occurs when a sector, market capitalisation (size of listed company), region or style that had previously been flat or underperforming peers starts to gain momentum and becomes attractive to investors. Market rotation can be long term when it comes to general investment philosophy or short term in the

case of a specific industry or sector. For example, investors may talk of the style rotation between growth and value stocks or sector rotation as money invested in companies from one industry moves to another as traders try to anticipate the next stage of the economic cycle.

An external incident is often the catalyst for a style rotation and the late 2020 / early 2021 shift to value and cyclical stocks is very much linked to the global recovery from the COVID pandemic. Specifically, it was the November announcement of effective vaccine roll outs that resulted in a dynamic change to the base case scenario of the market. Whereas investors had abandoned travel, tourism and hospitality stocks in favour of the so-called “stay-at-home” stocks or other “COVID winners” when the pandemic first hit, they have since moved to blue chip companies across mining, banking and healthcare. Broadly, the logic of the stock market is that a particular set of stocks usually move together, with investors switching accordingly – in this case from growth to value and defensive to cyclical stocks.

Rotation can therefore underpin investment strategy and even those investors who don't base their strategy on sector rotation should be aware of these cycles. However, it should be noted that even significant rotations (like growth to value) doesn't have to mean the collapse of the top growth stocks in an index. It could simply mean that large-cap growth or tech company expansion slows or consolidates while previously underperforming sectors catch up.

This analysis has been prepared by [Perpetual Investment Management Limited \(PIML\)](#) ABN 18 000 866 535, AFSL 234426. It is general information only and is not intended to provide you with financial advice or take into account your objectives, financial situation or needs. You should consider, with a financial adviser, whether the information is suitable for your circumstances. To the extent permitted by law, no liability is accepted for any loss or damage as a result of any reliance on this information.

The information is believed to be accurate at the time of compilation and is provided in good faith. This document may contain information contributed by third parties. PIML does not warrant the accuracy or completeness of any information contributed by a third party. Any views expressed in this document are opinions of the author at the time of writing and do not constitute a recommendation to act.

The product disclosure statement(PDS) for the Perpetual Diversified Income Fund issued by PIML, should be considered before deciding whether to acquire or hold units in the fund. The PDS and Target Market Determination can be obtained by calling 1800 022 033 or visiting our website <http://www.perpetual.com.au> .

No company in the Perpetual Group (Perpetual Limited ABN 86 000 431 827 and its subsidiaries) guarantees the performance of any fund or the return of an investor's capital. Past performance is not indicative of future performance.